



PROVINCIAL WATERWORKS AUTHORITY PHUKET BRANCH



การประปาส่วนภูมิภาค
มุ่ง - น้อม - เพื่อประชาชน - สู่ความยั่งยืน



INTRODUCTIONS



MR.EAKAWAT SUGPRAJUN

**Head of Production
Section**





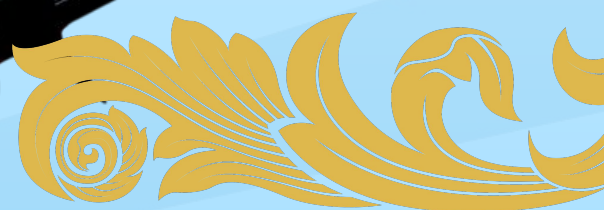
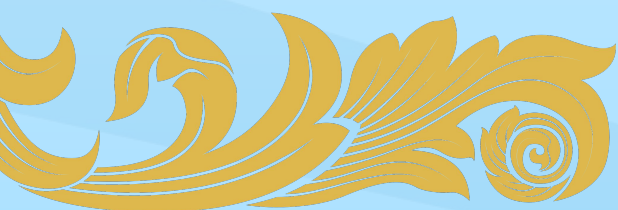
INTRODUCTIONS



MR.CHAINARONG KONGDUM

Engineer of Production

Section



History & Geography



THAILAND

Thailand is located in Southeast Asia. The country covers an area of 513,000 square kilometers and when looking on a map, resembles the shape of an axe. To the north it borders Myanmar and Laos and to the east Laos and Cambodia. The south is next to the Gulf of Thailand and Malaysia. Westward is the Andaman Sea and Myanmar.



History & Geography



Laem Phromthep



PHUKET

Phuket Province is a province in the upper southern region of Thailand.

The widest part of Phuket Island is 21.3 kilometers and the longest part of Phuket Island is 48.7 kilometers. Phuket Island alone has an area of 543.034 square kilometers. The satellite island has an area of 27 square kilometers. Total area is 570.034 square kilometers



Missions and Duties

PROVINCIAL WATERWORKS AUTHORITY



การประปาส่วนภูมิภาค
Provincial Waterworks Authority

1. Conduct surveys, provide water sources and procure raw water for water supply production.
2. Produce, deliver and distribute water supply across the country except the Bangkok Metropolitan area, Nonthaburi and Samut Prakan provinces.
3. Undertake other businesses related to or in continuation with the water supply business.

“ มุ่ง - มั่น - เพื่อปวงชน - สู่ความยั่งยืน ”

Provincial Waterworks Authority

Missions and Duties

PROVINCIAL WATERWORKS AUTHORITY PHUKET BRANCH



การประปาส่วนภูมิภาค
Provincial Waterworks Authority

1. Conduct surveys, provide water sources and procure raw water for water supply production.
2. Produce, deliver and distribute water supply in Phuket Province.
3. Undertake other businesses related to or in continuation with the water supply business.

“ มุ่ง - มั่น - เพื่อปวงชน - สู่ความยั่งยืน ”

Provincial Waterworks Authority

PROVINCIAL WATERWORKS AUTHORITY PHUKET BRANCH



Has a total of 3 water
treatment plants



“ มุ่ง - มั่น - เพื่อปวงชน - สู่ความยั่งยืน ”

Provincial Waterworks Authority

PROVINCIAL WATERWORKS AUTHORITY PHUKET BRANCH



Bang Wad Water Treatment Plant

Capacity Utilization Rate of 2,375 m³/hour

or

57,000 m³/day



Bang Wad Reservoir

Capacity 10.20 MCM



PROVINCIAL WATERWORKS AUTHORITY PHUKET BRANCH

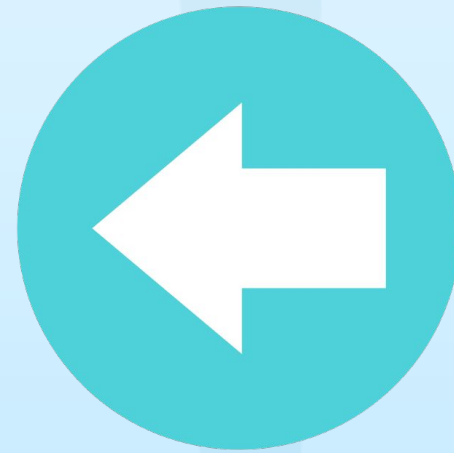


Bang Jo Water Treatment Plant

Capacity Utilization Rate of 1,300 m³/hour

or

31,200 m³/day



Ban Bang Niew Dum Reservoir

Capacity 7.79 MCM



PROVINCIAL WATERWORKS AUTHORITY PHUKET BRANCH



Klong Katha Water Treatment Plant

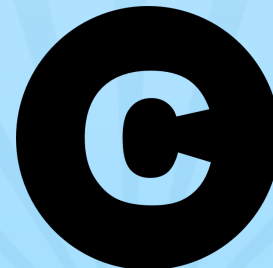
Capacity Utilization Rate of 500 m³/hour

or

12,000 m³/day

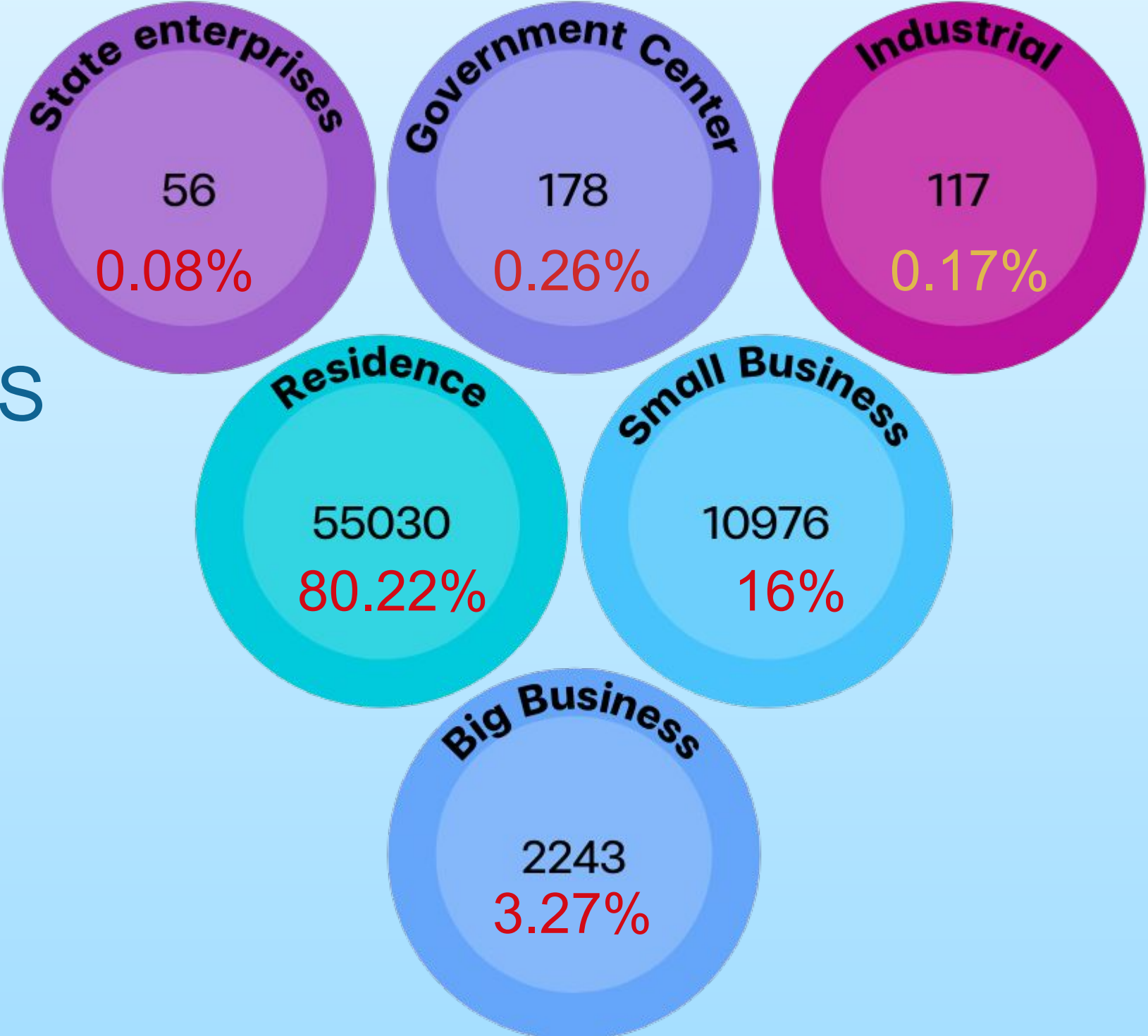
Klong Katha Reservoir

Capacity 4.14 MCM



PWA PHUKET Categorized by Types of Service

TOTAL 68,600 CUSTOMERS
PWA PHUKET





History of the U.S. and Thailand

The United States and Thailand established relations in 1818 and signed a Treaty of Amity and Commerce in 1833, formalizing diplomatic relations. The Treaty of 1833 was the United States' first treaty with a country in Asia, making Thailand U.S.'s oldest friend in the region.



190 *Years of*
U.S.-Thai Diplomacy





USASCP

US-ASEAN Smart Cities Partnership



Water Smart Engagements (WiSE) Program



PROVINCIAL
WATERWORKS
AUTHORITY
PHUKET BRANCH
PHUKET, THAILAND



2022 - Present



MILWAUKEE WATER WORKS
MILWAUKEE, WISCONSIN,
USA



Water Smart Engagements (WiSE) Program



21-22 April 2022

Water Smart Engagements (WiSE) Program



31 May 2023

Water Smart Engagements (WiSE) Program

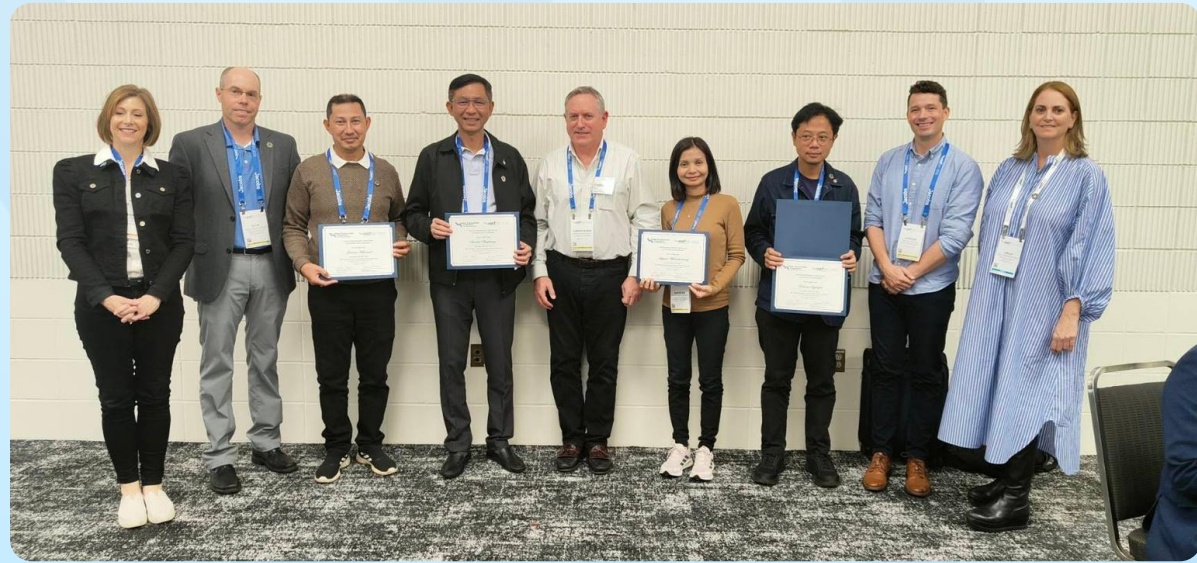


14-17 June 2024

Water Smart Engagements (WiSE) Program



Water Smart Engagements (WiSE) Program



Water Smart Engagements (WiSE) Program



Water Smart Engagements (WiSE) Program



MILWAUKEE WATER WORKS, MILWAUKEE, WISCONSIN, USA

GLOBAL

Warming

ALL



Global Warming

PROVINCIAL WATERWORKS AUTHORITY PHUKET BRANCH
Is highly aware of the global warming situation that affects us now and will affect us in the future. PWA, Phuket Branch has implemented a program called Corporate Social Responsibility (CSR) which is a collaboration between government agencies in Phuket Province, local communities and youth organizations to develop, improve and restore sources of water and to educate the younger generation about the importance of water.



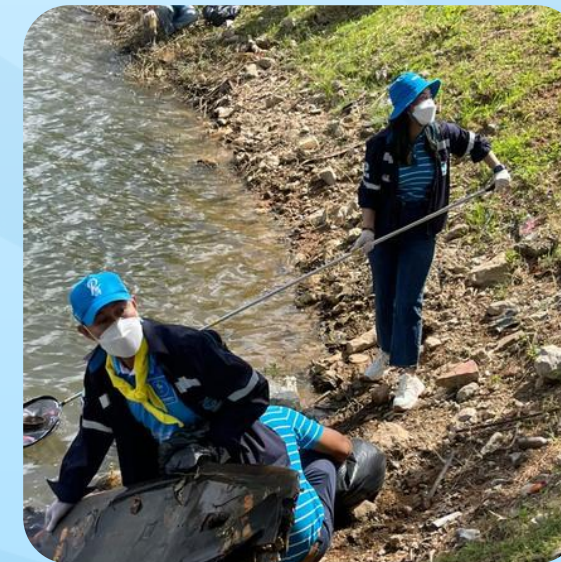
Collaboration with Other Government Agencies

PROVINCIAL WATERWORKS AUTHORITY PHUKET BRANCH

Collaborates with the Office of the National Water Resources to set up an organization for water users to develop sources of water, including maintenance, restoring sources of water and water resources for sustainability



Corporate Social Responsibility (CSR)



Corporate Social Responsibility (CSR)



Corporate Social Responsibility (CSR)



Corporate Social Responsibility (CSR)



Corporate Social Responsibility (CSR)



Short-Term Emergency Solution

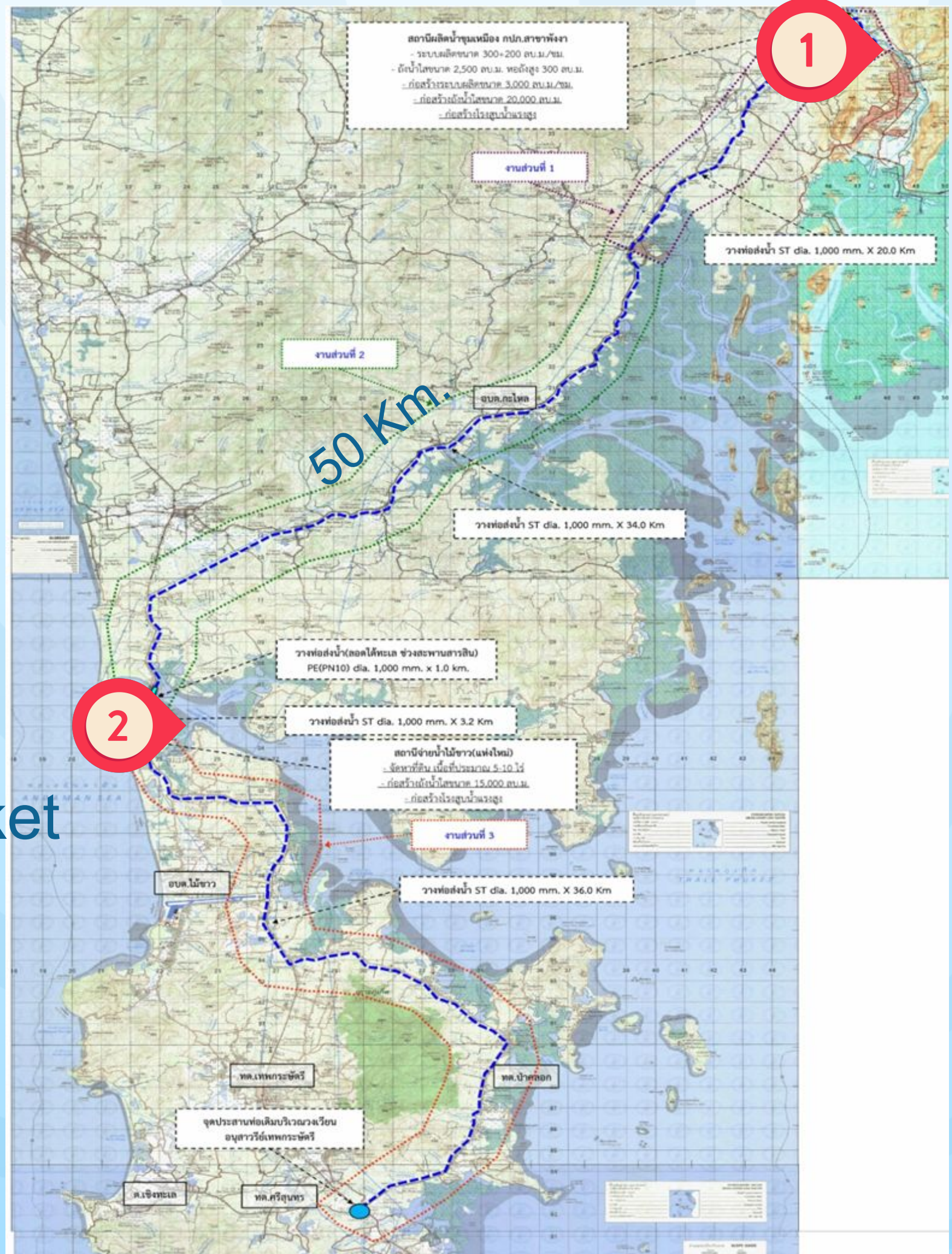


Short-Term Emergency Solution





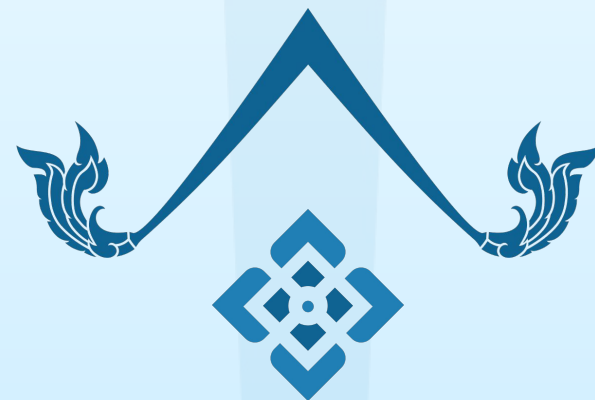
Project Planning for
Water Sustainability
During Global Warming



Phangnga

Project Planning (Phase 1)

Phuket



THE END

PROVINCIAL WATERWORKS AUTHORITY PHUKET
BRANCH, PHUKET, THAILAND

